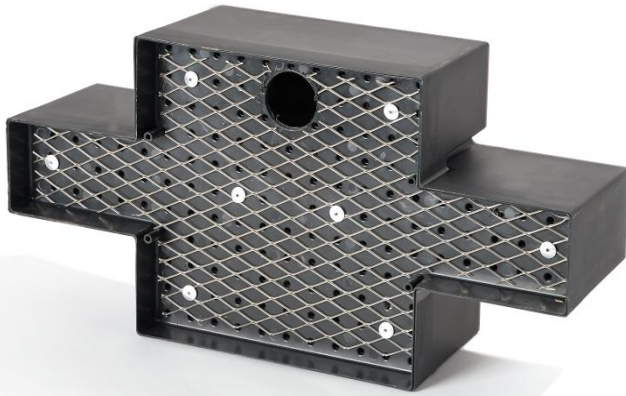


## Fitting Guide for Box in Render

1. The box is labelled indicating the species the box is designed for (sparrow box illustrated) and the top of the box i.e. the right way up.
2. If the front is to be removable, **go to point 3**. Otherwise, set the box so that it sits flush with the blockwork and use the sponge bung (supplied) to insert into the entrance hole during rendering. Render across the front of the box exactly as for the rest of the wall.



3. Where the front is to be removable only, we recommend rendering the first (scratch) coat a day before fitting. Lay the box face up on the ground to do this. The scratch coat should come up to 5mm from the protruding front lip of the box – see illustration above right. Use the sponge bung (supplied) to insert into the entrance hole during rendering.
4. When fitting, set the front of the box such that the lip protrudes from the blockwork by the thickness of the final render coat. Add the final coat to the box along with the rest of the wall, leaving the retaining screws and the outer perimeter of the box just showing. You should see a faint thin black line. This makes future removal of the front possible.

